

*Orienteering Club "Slavutich", Ukraine, Kyiv*



**IV international orienteering event  
KievOPEN 2016  
Bulletin №2**

**моршинська®**



*1-2 October 2016  
Kyiv, Ukraine*

## **Organizers**

Orienteering Club "Slavutich",  
Oleksandr Rybakov, +38 (050) 384-59-04  
levgenii Voronetskyi +38 (066) 203-06-65

## **Date and venue**

1-2 October 2016, Kyiv, Ukraine

## **Programme**

### **31 August 2016, Wednesday**

23:59 Deadline for entries with lower prices

### **26 September 2016, Monday**

23:59 Final entry deadline

### **1 October 2016, Saturday, Horenka / Moschun**

9:30 - 11:30 Competition office work

12:00 The first start of the long distance

### **2 October 2016, Sunday, Kyiv, Peizazhna Alley, Andriivskiy Descent**

8:45 - 9:15 Competition office work

9:30 The first start of the sprint distance

12:30 Prize giving ceremony

13:00 Lottery for competitors (prizes from sponsors)

## **Groups and competitors**

M/W 12, 14, 16, 18, 20, 21A, 21E, 35, 45, 55, 65, 75, Kids, Open-beginners.

In case, if the less than 10 competitors will be entered in the one group, the organizers reserve the right to combine age groups.

## **Open groups entry**

*Open-Beginners* – No age limitations for this group. Everyone is able to participate.

*Kids* – the group is devoted for children younger than 11 years. Age limitation – children born in 2006 and younger.

Competitors themselves are responsible for their own security, life and health during the competitions and are obliged to have corresponding health insurance. Submitting personal entry for participation in the competitions is considered as confirmation of acceptance of these terms.

## **Punching system**

Sportident punching system will be used.

Sportident cards can be rented for the price of 20 UAH for two days (or 10 UAH per stage). SI rent fee should be paid together with entry fees and does not depend on date of payment.

Pledge amount in case of SI card loss is 1000 UAH.

## **Entries**

Entries are accepted till **26.09.2016** at

<http://www.orienteeringonline.net/CompetitionBasicInfo.aspx?CompetitionID=2863>

After **26.09.2016** entries are possible only for Kids and Open-beginners groups using [info@kievopen.com.ua](mailto:info@kievopen.com.ua) or on site at the competition office.

When making the entry competitor must specify **club name and his/her representative**. In case if the competitor does not belong to any clubs, he/she must enter as "individual".

## Entry fees

For two stages:

	Payment till 31.08.2016	Payment since 01.09 till 28.09.2016	Payment after 28.09.2016
For the group Kids	20 UAH	30 UAH	45 UAH
For the groups M/W12, 14, 16	50 UAH	75 UAH	100 UAH
For the groups M/W18, 20, 21A, 35, 45, 55, 65, 75 and OPEN-beginners	80 UAH	120 UAH	150 UAH
For the groups M/W21E	100 UAH	150 UAH	200 UAH

For one stage:

	Payment till 31.08.2016	Payment since 01.09 till 28.09.2016	Payment after 28.09.2016
For the group Kids	10 UAH	15 UAH	25 UAH
For the groups M/W12, 14, 16	30 UAH	40 UAH	50 UAH
For the groups M/W18, 20, 21A, 35, 45, 55, 65, 75 and OPEN beginners	45 UAH	65 UAH	80 UAH
For the groups M/W21E	60 UAH	80 UAH	120 UAH

**Entry fee size depends on the date of payment, not on the date of registration**

## Payment of entry fees

Till **29.09.2016** entry fee can be paid to Privatbank card account:

Number **5168 7555 2099 6584 (Воронецький Євгеній Юрійович)**

It can be done in the following ways:

1. Using self-service terminals of Privatbank or in Privatbank branches;
2. Using Privat24 system (for the cardholders of Privatbank);
3. Using Ipay-system:

<https://www.ipay.ua/ua/p2p/default/constructor/5203fb0e02d8cbc5d704f7c3fe3b3d7b>

After payment of entry fee, you need to send a SMS to **+38 (066) 203-06-65** or e-mail to [info@kievopen.com.ua](mailto:info@kievopen.com.ua) , where specify: name and surname of competitor, group, amount paid, date and time of payment.

Example message: Ivan Mikhailiuk, M-45, 80 UAH, 25/09/2016, 15:30

Please, keep payment receipt for presenting at the competition office during registration.

**After 29/09/2016 payment of entry fees can be only made at the competition office.**

**For non-Ukrainian residents, who do not have a possibility to use payment methods, mentioned above, entry fees can be paid on site at competition office**

In case of force majeure, which does not allow the competitor to take part in the competition organizers can partially refund entry fee. The amount of compensation is 50% of the entry fees paid. For getting refund, the competitor has to inform organisers at least 3 days before the

competition and provide documents confirming the force majeure. In other cases, the entry fees is not refunded.

### **Results**

The overall winners will be defined by the sum of points from two stages. Points per each stage are calculated using following formula:

Points of the competitor = Time of the group winner / Time of the competitor x 1000

### **Prize giving ceremony**

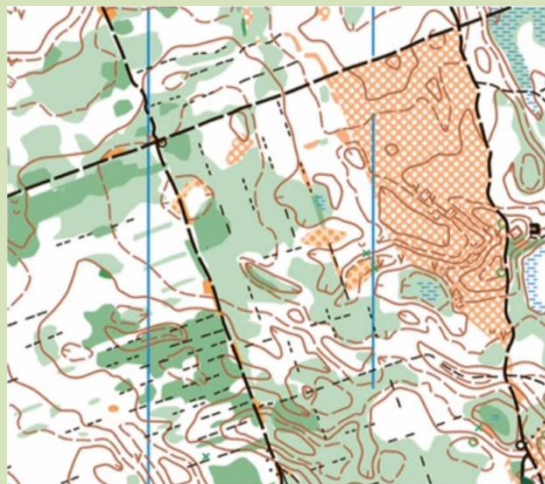
The first three competitors in each age group, except for M/W 21E, will receive the prizes.

The first three competitors in M/W21E will receive the prizes and the prize money. Prize money in M/W 21E groups will be defined as 30% from total amount of entry fees per each of these groups, but no less than 1500 UAH per each group.

**The competitors, who will not appear at the prize giving ceremony, will not be awarded!**

### **Terrain and maps**

#### **Long distance, 01.10.2016**



#### **Sprint distance, 02.10.2016**



#### **Long distance, Saturday, 01.10.2016**

Horenka / Moschun

Mapping – Vitaliy Hychko, Kateryna Dzema, June – September 2016.

Mapping materials of V. Bortnik from 2007 were used

Scale – 1:10000, H – 2,5m

Terrain is mostly flat, represented by pine forest with some denser and detailed parts. Runnability varies from very good to very slow. Path network is highly developed.

Dangerous places: roads with intensive traffic, rubbish.

Recommended clothing: closed.

#### **Sprint distance, 02.10.2016**

Kyiv center, Peizazhna Alley, Zamkova Gora, Andriivskiy Descent

Mapping – Mykhaylo Teslenko, June – September 2016

Scale – 1:10000, H – 2,5m

The sprint terrain is located in the historical center of the Kyiv and is used for orienteering competitions for the first time!

Terrain could be described as unique mix of narrow streets, passages and yards with park zone. Park part is represented by Peizazhna Alley, Zamkova Gora (hill) and Starokyivska gors (hill) with steep hills and vegetation with varying runnability

Dangerous places: roads with intensive traffic, rubbish, steep hills.

Recommended clothing: open.

### **Location of the event centres**

Scheme of the event centres location

<https://www.google.com/maps/d/u/1/viewer?mid=1i9wfDTy95kxVroTWqzCNCtZfVQU>

GPS coordinates of the event centres

**LONG DISTANCE, 01.10.2016**

50.56767, 30.31863

**SPRINT DISTANCE, 02.10.2016**

50.45695, 30.51218

### **Preliminary parameters**

LONG DISTANCE, 01.10.2016			SPRINT DISTANCE, 02.10.2016		
Group	Length, m	Controls	Group	Length, m	Controls
Kids	1700	6	Kids	900	8
OPEN-Beginners	2000	6	OPEN-Beginners	2700	15
M12	2400	7	M12	1000	10
M14	3400	8	M14	2700	15
M16	5900	13	M16	3200	17
M18	8000	16	M18	4200	18
M20	8900	20	M20	4700	20
M21A	6100	15	M21A	3000	17
M21E	12400	26	M21E	5200	25
M35	8900	20	M35	4600	21
M45	5500	13	M45	3300	19
M55	4400	10	M55	3100	19
M65	3500	9	M65	2600	15
M75	3200	7	M75	2200	13
W12	2100	5	W12	900	8
W14	2800	6	W14	2100	12
W16	5700	12	W16	2700	15
W18	6600	11	W18	3500	17
W20	7500	17	W20	3900	19
W21A	5900	12	W21A	2100	13
W21E	9300	20	W21E	4200	21
W35	7500	17	W35	3200	18
W45	4900	12	W45	2800	16
W55	3800	8	W55	2400	14
W65	3400	9	W65	2200	13
W75	2800	6	W75	1900	11

### **Contacts**

For additional inquires use [info@kievopen.com.ua](mailto:info@kievopen.com.ua)

**Additional information will be provided in the Bulletin №3**